



Winter 2010

www.nebraskapresswomen.org

NPW NEWS_eLETTER

Hahn Named Communicator of Achievement

By Cheryl Alberts

Terri Jo Hahn of Osceola, a 16-year member of Nebraska Press Women and features editor of the Grand Island Independent, is the 2010 NPW Communicator of Achievement.

Hahn received NPW's highest award Oct. 9 during the organization's fall convention at Red Cloud at the Palace Steakhouse and Lounge.

Hints about the 2010 honoree were dropped before the announcement, including that she has been an officer, is familiar with NPW bylaws, and has a penchant for cranes, cats and a flamingo. The Flamingo in Las Vegas is where Hahn stays when she watches performances of one of her biggest idols, Donny Osmond.

In addition to NPW, Hahn is a member of the National Federation of Press Women (NFPW). With the state honor she will represent NPW at the national group's convention hosted by NPW and Iowa Press Women in Council Bluffs, Sept. 8-10, 2011.

Hahn's NPW roles have included president, historian, newsletter editor and vice president. She now

serves on the NPW President's Advisory Council. She has been a member of the Nebraska organization since 1994 and of NFPW since 1990.

Lori Potter



Hahn reacts to the NPW announcement.

Hahn, Independent features editor since 1993, edits and designs a weekly food section, weekly lifestyle and entertainment pages, and daily community news pages, for which she has earned multiple honors in the NPW and NFPW Communications Contest.

From 1989-1993 Hahn was

news editor at the Dodge City Daily Globe in Dodge City, Kan. While there she served as president of the Dodge City Media Pros, a local affiliate of Kansas Press Women, and on the board of KPW as affiliate president.

Hahn graduated from Garden County High School in Oshkosh and this summer attended a multi-day reunion there. She earned degrees in interior design and in journalism from the University of Nebraska—Lincoln.

The COA award is the highest honor bestowed by NPW. Candidates are nominated by NPW members for exceptional achievement in the communications field, service to NPW/NFPW and to their community. Past COAs cast their ballots to select the honoree.

Showering Hahn with congratulations for organization's highest honor were past NPW recipients Joan Burney, 1981 and 1992, and 1993 NFPW COA; Judy Nelson, 1986; Lori Potter, 1995; Andrea Cranford, 1998; Mary Pat Finn-Hoag, 2001; Cheryl Alberts Irwin, 2006; Ruth Brown, 2007; Barb Micek, 2008; and Martha Stoddard, 2009.

PRESIDENT'S COLUMN

Winter Update

Ruth Brown, president

NPW membership benefits are numerous:

- Communications contests that provide great feedback and awards
- Scholarships we fund for promising journalism students
- Educational and enjoyable twice-a-year state conventions
- Communicator of Achievement Award for one of our members
- Nebraska Women Journalists Hall of Fame (coming in September)
- The Sept 8-10 NFPW Convention that we will co-host with Iowa Press Women.

Please communicate these benefits to prospective members and see if you can bring a friend to NPW in time for the contest! Remember, dues must be paid by Dec. 31 in order to participate in the professional and college student communications contest.

Scholarship information has been sent to Nebraska colleges and universities with journalism programs, and is posted on our website.

If you know of a good candidate for NPW's \$500 Memorial Scholarship or the \$300 Excellence in Media Scholarship, send them a link to: <http://www.nebraskapress-women.org/scholarships.html> The application deadline is Dec. 17.

The Memorial Scholarship is supported by interest earned from donations in memory of departed members. The Excellence in Media Scholarship is funded by proceeds from the professional communications contest.

What can you do to help with the **NFPW convention** that Nebraska and Iowa are co-hosting Sept. 8-10 in Omaha and Council Bluffs? Can you help contact potential speakers? Or pitch potential sponsors? Or get in-kind donations? Or help during the convention: meeting and introducing speakers? To volunteer or for more ideas about how to help, please contact Stephanie Geery-Zink, geeryznk@inebraska.com

Be thinking about who you want to nominate for the very first inductees into the **Nebraska Women Journalists Hall of Fame**. The nominee must have a Nebraska background by birth or work experience, having spent a significant amount of her professional career in Nebraska; must have attained a position of prominence in her field; may come from any facet of the journalism profession; and may be living or dead.

The type of nominee sought is one who, through talent, initiative, intelligence and stamina, made a difference for the profession, for her community and for those who follow in her footsteps.

The deadline for nominations has not yet been set but will probably be in the spring. The first women chosen will be inducted at the fall NPW convention, which will be held in conjunction with the NFPW convention, Sept. 8-10.

NPW's spring convention will be April 29-30 at the State 4-H Camp near Halsey. Mark your calendar (as soon as you get it). This is an absolutely beautiful location



Ruth Brown

in the world's largest hand-planted forest, the Nebraska National Forest. The cabins are heated, and excellent food is served on site, but you need to bring your own linens. Lyn Messersmith and Sandy Benson are coordinating the event and ask that members also bring a reading and/or a musical instrument for entertainment after the awards banquet. (Maybe kazoos?)

Our thanks to fall 2010 convention coordinator Lynne Ahlers for the fantastic time we had in Red Cloud! We all learned a lot more about the town, the area, Willa Cather, the Starke Round Barn and efforts to preserve and promote all of the above.

Thanks also to members who served as officers, board members, and President's Advisory Council members the past two years. With all of the activities and events of this organization, we truly needed all of your help to make it work. Thanks in advance to the 2011-12 officers and board members (list on page 3).

CONVENTION RECAP

People Are Small Town's Most Valuable Assets

By Jennifer Chick

Although Red Cloud's economy is lucky to receive a boost from its most famous resident, Willa Cather, Don Theobald, a member of the Red Cloud Economic Development Group, shared insight that any small town can use.

"We don't make any bones about it," Theobald said. "If we didn't have Willa Cather, we'd be just like any other small town. We experience all the problems of small towns in Nebraska."

But what Theobald emphasized at the Nebraska Press Women's Fall Convention in Red Cloud Oct. 9 was that citizens are at the core of community promotion. A committed group of citizens passionate about Red Cloud have dedicated their efforts to focusing on all of Red Cloud's attributes, not just the town's link to Nebraska's most famous author.

"It's a lot of work by a lot of people, but we are happy to do it," Theobald said. "That's just what you have to do in a small town."

Residents in Red Cloud are eager to share their town's stories with visitors. And if they don't know the answers to questions posed, they direct visitors to the Red Cloud Opera House, a community hub that has tour guides knowledgeable in all things Red Cloud-related.

"Red Cloud is lucky to have a lot of good people that care," Theobald said. "You just have to find people that have an interest. If you own your own business, if you

Lori Potter



have kids in school, you want to keep these towns going."

The economic development group persuaded a business owner to locate his Subway franchise in Red Cloud. The town promotes Street Car Days, its annual summer celebration, and also sets aside dollars to be used for grants toward storefront restoration. Red Cloud is proud of its location along a Nebraska Historic Byway and wants to keep the town looking nice for all who pass through as well as those who stop to browse.

The city government has also been instrumental in kick-starting building projects. Right now, the city is building an assisted living facility financed with grant money. When an old sale barn in town was an eye sore, the city bought the building and then sold it to a resident who now has a successful mechanic shop there.

"The easy solution to tourism in a small town is to have Willa Cather," Theobald said. "But if you don't have someone like Willa Cather, take advantage of what you do have."

NPW BOARD OF DIRECTORS

President

Ruth Brown

Vice President

Bette Pore

Secretary

Mary Pierce

Treasurer

Sherry Thompson

Past President

Stephanie Geery-Zink

Communicator of Achievement

Martha Stoddard

Communications Contest

Barb Micek, Andrea Cranford

High School Contest

Sara Giboney, Betsy Frederick Herrman

Historian

Mary Pat Hoag

Legislative/First Amendment

Diane Wetzel

Membership

Cheryl Alberts Irwin

Member Services

Lori Potter

Newsletter

Rita Brhel

Parliamentarian

Judy Nelson

Public Relations

Terri Hahn

Scholarship

Barb Batie

www.nebraskapresswomen.org

Starke Round Barn Tour Delights Presswomen



Photography by Lori Potter

By L. Lynne Ahlers

Fall 2010 NPW Convention participants enjoyed lunch on the grounds of the Rasser family farm in rural Webster County.

The Rassers are the caretakers and owners of the Starke Round Barn, a nail-less, geometric structure built in 1902-03 by Conrad Starke and his wife, Veronica, when they settled in Webster County.

The Starkes had made a family fortune with a line of tugboats on the Great lakes, and eventually moved from Milwaukee to a homestead east of Red Cloud. Veronica's brothers, Gottlieb and Christian Rasser, first moved to the Republican valley after serving in the Civil War. They encouraged Conrad to come and purchase the land adjacent to their homesteads, which he did in 1885.

After the death of Conrad's father, the tugboat business was liquidated and the funds were dedi-

cated to the family farm, formally known as Starke Farms.

The Starkes attempted several agricultural businesses. After a livestock feeding business failed, they began a dairy operation in the basement of the barn. However, the



family once again met with financial misfortune when a line of tuberculosis showed up in the operation's prize-winning Holsteins. The cattle were quarantined and eventually destroyed.

The Starke barn is said to have started with a million dollars in capital, which was gone in a span of 25 years. In 1930 the barn was sold in a foreclosure auction on the steps of the county courthouse.

Walter and William Rasser, nephews of Veronica Rasser Starke, purchased the land and barn. Since then, the barn has been owned and cared for by four generations of the Rasser family, including the current owners, Ron and Elizabeth Rasser. Their son and daughter-in-law, Calhoun and Stacy, live on the property with their two small daughters.

continued on page 5



Starke Barn

continued from page 4

NPW's visit to the Starke Round Barn began with a luncheon of grilled chicken, vegetables and rice provided by a local restaurant, The Palace Lounge. Elizabeth Rasser provided homemade apple pie a la mode, featuring the homestead's organic apples. She also provided the chance to purchase fresh ground cornmeal and organic apples, all the while eager to tell the story of the barn.

The Starke barn is 65 feet high and 130 feet in diameter, with a center brick silo measuring 28 feet across. The frame of the structure is held with tension and balance, rather than with nails and pegs.

It is the only barn in existence known to be perfectly round. The current owners believe it was built to withstand the strong prairie



winds. Massive timbers of virgin Wisconsin wood were shipped by railway to aid in its construction.

The barn's top level contained hay storage, and a track was used to hoist hay into the loft. The main level housed machinery, and the middle section of the main floor was reserved for teams of horse-



drawn wagons that hauled the hay. Grain bins were later built around the silo on the main floor.

The lower level housed livestock, with the southern half devoted to the milking operation and the northern part to horses.

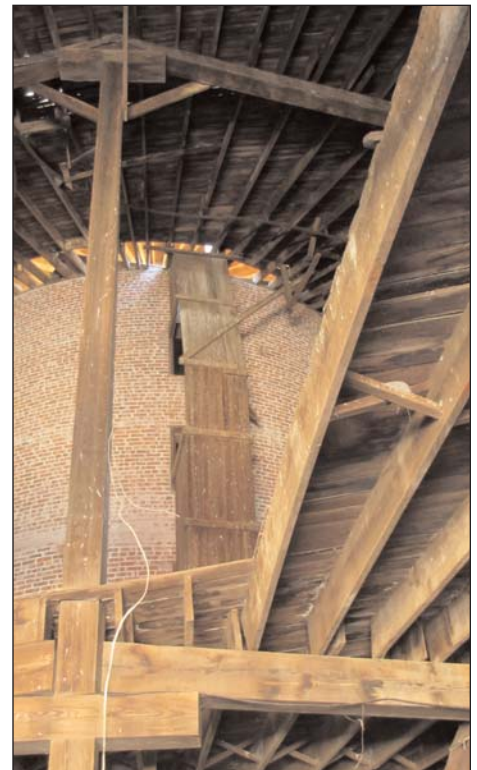
Today the barn is almost as it was all those years ago. The milking stanchions remain, as well as the manure bucket and trolley track, although the roof and windows of the lower floor are in dire need of repair.

Each fall, the Rassers host two festivals — Barnfest and an annual cookoff challenge — to raise funds for Starke barn restoration. These events include demonstrations of historic farming activities such as butter churning and cider pressing. In addition, the sale of organic Cortland apples, fresh-milled cornmeal and organic cider go into a fund to help return the barn to its former glory.

To book an event or view the Starke Round Barn, visit red-cloudguiderocknebraska.com or

join the Facebook page. Contact the Rassers at 402-746-2754 or lrasser@gmail.com. Donations to the restoration fund may be sent to:

Starke Round Barn Restoration
People's Webster County Bank
126th W. 4th St.
Red Cloud, NE 68970



Press Women Explore Cather Country

By Bette Pore

Willa Cather was front and center for the members of Nebraska Press Women who attended the NPW Fall Convention Oct. 8-9 in Red Cloud.

Much of Saturday's programming took place at the Red Cloud Opera House, home of the Willa Cather Foundation, which is dedicated to preserving and promoting the understanding of Cather's life and writings.



Photos by Lori Potter

From the Willa Cather Pioneer Memorial Foundation, started in 1955 by five volunteers, to today's nonprofit organization that has four full-time employees and six to seven part-time staff members, the foundation has succeeded through the dedication of a growing number of Red Cloud area residents who appreciate the value of Cather's books and short stories.

The NPW group was led on a tour of Cather Foundation sites around Red Cloud by Dorothy Mattison, a tour guide who has been involved in the foundation since 1958.

Mattison "knows" Cather like only someone who has lived in the Red Cloud area for much of the past century and immersed herself

in Cather lore could know her. She was able to share stories of how Willa was looked at by her parents and the other people of Red Cloud, how she followed the local doctor around and helped him treat patients, and how she liked to dress like a boy.

The tour started at Cather's childhood home, where she lived from 1884 to 1890.

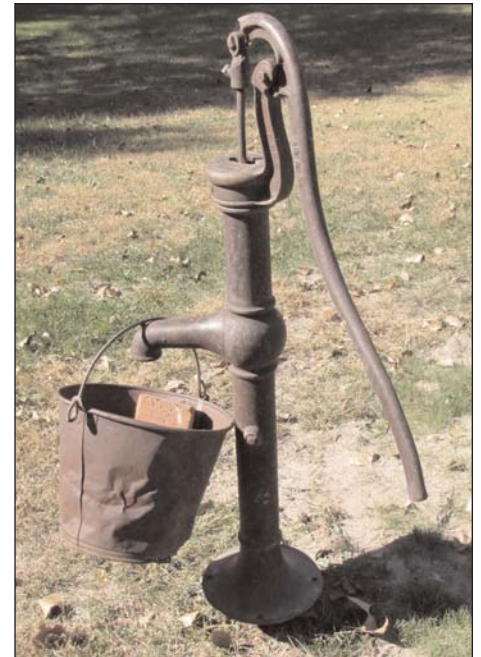
Born in Virginia, Cather moved with her family to a Nebraska farm 16 miles from Red Cloud. Her father had plans to raise sheep there.

"But her dad wasn't a farmer," Mattison said. And being so far from town with a family that included seven children didn't seem practical or safe to the Cathers.

They rented a house in town when Willa was about 10 and moved 12 people into it.

"It was pretty crowded," Mattison said. But they rented that house for 20 years.

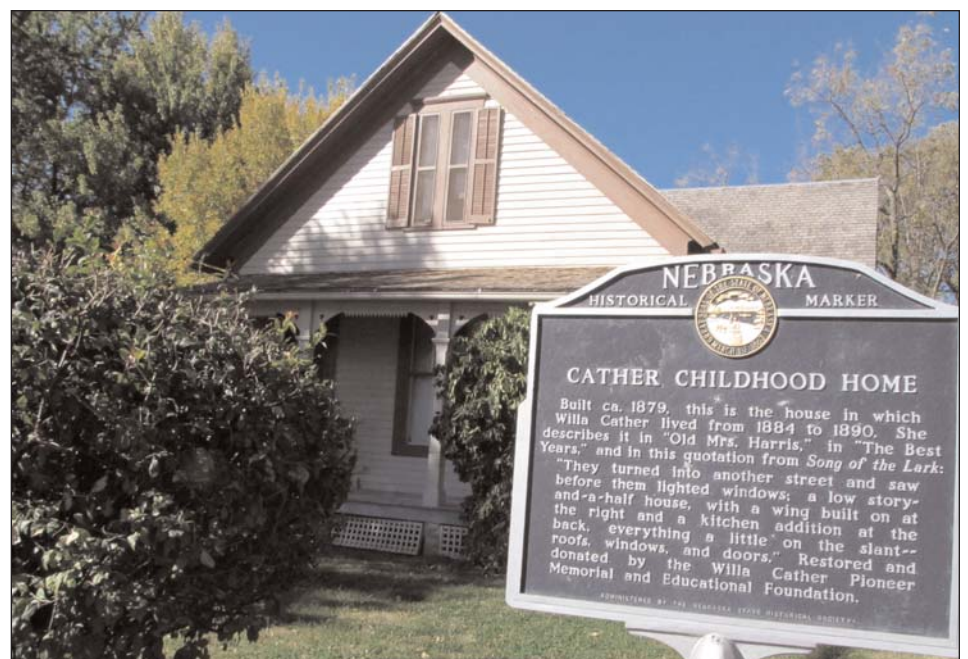
It was only after the children had all grown up that the Cathers



bought a huge house that most recently was Cather's Retreat, a bed and breakfast, and is now closed and up for sale.

The house where Willa grew up in Red Cloud has many furnishings that belonged to the Cathers, and everything in the house dates back to the 1880s.

continued on page 7



Cather Country

continued from page 6

That house is described in Cather's "Old Mrs. Harris," "The Best Years" and "Song of the Lark." Also on the tour was the Harling House, where the Harlings lived in "My Antonia."

Mattison said this was the fanciest house in town. Mrs. Harling had been an opera singer in Europe and Mr. Harling was a banker.

"Willa loved to come here," Mattison said.

The house was donated to the foundation in 2000 and is being renovated. An apartment upstairs is used by visiting scholars who need a place to stay while doing research on Cather in Red Cloud.

All the sites on the Cather tour have major places in Cather's writing. St. Juliana Falconieri Catholic Church, built in 1883, is the church where Antonia is married in "My Antonia." The altar was bought in memory of Mr. Harling. It was a church until 1906 and then became a private home.



Also on the tour is Grace Episcopal Church, which was built in 1884 and moved to its present location in 1891. Cather actually joined the church in her adult life after she had left Red Cloud and was a member from 1922 until her death in 1947.

A major stop on the tour is the Burlington Depot, built in 1897. It was moved to its current location from a spot near the railroad tracks and was restored by the foundation.

"Willa Cather loved trains," Mattison said. "She came in and out of this depot. Willa loved to meet all the immigrants and talk to them."

The depot had sleeping quarters upstairs for people who worked for the railroad.

On display in the depot is information about the colonization of Webster County and the ethnic makeup of the early residents.

Jennifer Pancoat, office manager for the foundation, showed the group the Opera House, which was built in 1885 and figured prominently in Cather's early life. All the floors are original and it has all the

original plaster walls, as well. On the stage are signatures of many of the earliest performers.

There are numerous performances at the Opera House even now and after the NPW tour, a wedding was held there. Pancoat said there are 10,000 to 12,000 visitors at the Opera House each year in a community of only about 1,300 people.

The renovation that began in 2000 took more than a year and cost \$1.3 million. The foundation moved its offices there in 2003 and operates a gift shop there, too.

Anyone interested in becoming a member of the Willa Cather Foundation can join online at www.willacather.org.

The benefits of membership include regular updates on special events, a subscription to the Willa Cather Newsletter & Review and free tours of Cather historic sites in Red Cloud.

The foundation is also starting an e-letter for the opera house and holds a Prairie Writers Workshop every year.

NPW NEWS

Great Gifts for Yourself or Friends; Help Build Beel Scholarship Fund

By Lori Potter

As you're making your Christmas gift list and checking it twice, please consider doing some of your shopping at the Nebraska Press Women member services "store."

It's a chance to get some unique gifts while supporting NPW projects.

Several members already are planning to give friends and family the new six-packs of 5x7 Sandhills photo notecards as Christmas gifts. The photos were taken by longtime NPW member Marianne Beel of Valentine and all proceeds from the notecard sales will go to the high school scholarship fund created in her memory.

There are two cards for each of three images: a newborn Hereford calf, storm clouds behind horses in a pasture and the yellow blooms of a prickly pear cactus.

NPW is selling the cards to members for \$10 a packet but if the cards need to be mailed, you must add \$2 per packet. Make your check out to Nebraska Press Women and mail it to Ruth Brown (University of Nebraska, College of Journalism & Mass Communications, P.O. Box 880443, Lincoln, NE 68588). For each packet sold, \$5.80 goes to the Marianne Beel Scholarship fund.

Only 40 sets of notecards remain, so you may want to reserve yours by e-mailing RuthBrown08@gmail.com.

Shoppers also can get a little something for themselves or others out of the Member Services Bargain Bin, including some last-

chance opportunities for polo shirts, T-shirts and zippered business portfolios with the NPW logo on the front.

There are 11 portfolios left, now marked down to \$15 each. A great meeting aid, they include a place for a large legal pad, sleeves to hold agendas and other papers, smaller pockets for business cards and a calculator.

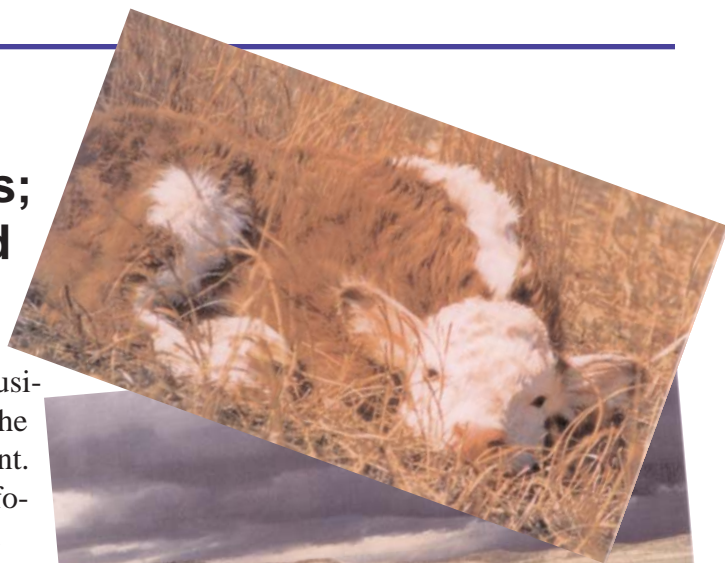
All of the remaining shirts are size large, including long-sleeved T-shirts (three black, one navy and one red) with the NPW logo and "Backed by the First Amendment" on the front and the First Amendment printed on the back at \$5 each. If you usually buy a smaller size, remember that these make great nightshirts.

The polos have "Nebraska Press Women" stitched on the upper left of the front. The two forest green heavy short-sleeved polos are yours for just \$10 each.

There are two lightweight polos for \$7 each — a beautiful green teal and a fabulous hot pink that would work great for the many breast cancer awareness events or just because you love hot pink.

The bargain bin also has:

- Seven packages of an earlier set of 4x6 photo notecards, with



eight different scenes from NPW members in each pack, \$4 each.

- 2x4 note pads with the NPW, 25 cents each.

- Twenty lapel pins made for our 60th anniversary in 2006, \$5 each.

Please add at least \$5 in your payment for orders that must be mailed. Adjust the amount according to the volume to be mailed.

Orders (for all but the Beel notecards) go to: Lori Potter, 4437 Parkwood Lane, Kearney, NE 68845 or via e-mail at lori.potter@kearneyhub.com. You also can call Potter at work, 308-233-9730, or home, 308-234-5974.

Get Your Contest Entries Ready; Deadline Is Jan. 8

Gather your best work from the past year. It's time for the annual Nebraska Press Women Communications Contest.

There are two important dates to remember:

Dec. 31, 2010. Your 2011 dues must be paid by this date in order to participate in the communications contest. You may renew your state membership by sending a check for \$25 (just \$12.50 for students and retirees) to Sherry Thompson, 5415 S. 174th Ave., Omaha, NE 68135. If you send your check close to deadline, please e-mail Thompson (sherry-thompson@cox.net) and tell her your check is coming. To renew your combined state and NFPW membership of \$94 (just \$30 for students, \$35 for retirees), go to: https://secure.shopisgtech.com/nfpw/renew_membership_app.cfm First place winners in the state contest will go on to compete at national if the entrant is a member of both NPW and NFPW.

Jan. 8, 2011 This is the date by which entries must be postmarked, no exceptions. Mail entries to: Barb Micek, Nance County Journal, PO Box 10, Fullerton, NE 68638.

One of the unique benefits of the NPW contest is that you receive feedback from a communications professional on every entry you submit. Another benefit is that the entry fee is just \$7 for the first entry and \$4 for each additional entry. Very few contests ask so little and give so much.

Contest Entry Checklist

___ PAY 2011 DUES BY DEC. 31, 2010

NFPW/NPW dues: \$94 for professionals (\$30 for students, \$35 for retirees) paid to NFPW. NPW-only: \$25 (\$12.50 for students and retirees) paid to Treasurer Sherry Thompson. Do not send dues to the contest director.

___ GET CATEGORIES LIST AND ENTRY FORM at www.nfpw.org

Note: Entries must be work done in 2010.

___ CAREFULLY READ CATEGORY REQUIREMENTS AND THIS CHECKLIST. Some categories require one story or one-day package; some (e.g., special articles, columns) require two stories; and some (series) have a maximum. Some (e.g., PR) require attached project explanation letters. If there is no byline, photo credit, design-editing credit or publication date on your tearsheet or other materials, attach a supervisor's note confirming your work and the date.

___ ONE ENTRY PER PERSON, PER CATEGORY OR SUBCATEGORY.

___ EACH STORY, PHOTO or PAGE DESIGN CAN BE ENTERED ONLY ONCE. For example, a photo entered as a single feature can't be part of a photo page entry. However, a story, photo and design from a single page can be entered in writing, photo and design-editing categories.

___ SUBMIT FULL TEARSHEETS OR COPIES OF FULL TEARSHEETS. Outline stories using a ruler and highlighter in a color other than black. Remember to mark jumps.

___ COMPLETE A FORM FOR EACH ENTRY. Include all dates and headlines for multiple parts. Attach forms to tearsheets with paper clips.

___ PHOTO ENTRIES REQUIRE A TEARSHEET AND PRINT/COLOR COPY up to 8x10.

___ CREATE A MASTER SHEET that includes:

Your name, address, day and evening phone numbers and e-mail address
Membership type with proof of dues payment (ie. cancelled check, copy of form sent). NPW/NFPW members must specify that they want first-place entries to advance to the NFPW contest. That commits you to reimburse NPW \$15 of the \$20 NFPW entry fee, payable at spring convention.

A chronological list of all entries:

1.B. News reporting, daily newspaper, "The headline....," date
5. Special series (4 parts), "Headlines and label/logo....," dates
12.A. Single page editing, non-daily newspaper, "page heading....," dates

Entry fees: \$7 for the first entry, \$4 each additional entry. Send to contest director with entries.

___ PUT ALL ENTRIES, MASTER SHEET AND FEES INTO ONE LARGE ENVELOPE. Don't put the individual entries into separate envelopes.

___ BEFORE MAILING, REVIEW CHECKLIST Questions: e-mail Barb Micek, micek@questoffice.net or Andrea Cranford, acranford@huskeralum.org.

SEND ENTRIES TO BARB MICEK, NANCE COUNTY JOURNAL, PO BOX 10, FULLERTON, NE 68638, POSTMARKED NO LATER THAN JAN. 8, 2011.

NPW NEWS

NPW Seeks Accountant

Know a good accountant? He or she can be working or retired, tall or short, Democrat or Republican.

Nebraska Press Women just needs a qualified person who has the time to look over the treasurer's records from the past two years and do a financial review.

Of course, we also prefer that this person charge only a modest fee.

If you know such a person, e-mail sherrythompson@cox.net and provide the person's name and contact information.

Pfost Moves to Wisconsin

NPW's Doreen Pfost moved to Elroy, Wis., this summer. Her new address is 107 Division St., Elroy, WI 53929.

"We're living atop a bluff in a tiny town about mid-way between Madison and LaCrosse (which is on the Mississippi River). We moved because of my husband Mark's job with the U.S. Fish & Wildlife Service. He works at Necedah National Wildlife Refuge (home of the 'other' whooping crane population, plus wolves, bears, loons and other cool things). The other attraction that drew us back to this area is that my parents and relatives are in the southeastern part of Wisconsin, and his are in Michigan. So we're closer to home."

Doreen can still be reached on her cell phone, 308-708-0776, and by e-mail, doreen@hugener.net.

NPW Welcomes Seven New Members

NPW:

Regan Anson, director of marketing and communications, Peru State College, 600 Hoyt St., P.O. Box 10, Peru, NE 68421, 402-872-2429; home: 5041 Boeckner Ave., Lincoln, NE 68516, 402-440-4451; ranson@peru.edu, regzloy@yahoo.com. (S-Nov 2010)

Joyce Dunn, book author; Home: 8615 Franklin, Omaha, NE 68114, 402-397-5401, lvnlite@cox.net. (S- Sept. 2010)

Jaylene Eilenstine, marketing director, All Makes Office Equipment Co., 402-977-3072; Home: 16913 Oakmont Dr. #2, Omaha, NE 68136, 402-669-8533 cell; jaylenee@allmakes.com. (S- Nov. 2010)

Eileen Wirth, chair, Department of Journalism, Creighton University, 2500 California, Omaha, NE 68178, 402-280-3014; Home 5601 William St., Omaha, NE 68106, 402-654-5457, emw@creighton.edu.

NPW/NFPW:

Trina Creighton, associate professor, UNL College of Journalism and Mass Communications, 402-472-4796 (work); Home: 5100 London Road #10, Lincoln, NE 68516, phone 402-208-9128 (cell), tcreighton2@unl.edu

Mary Garbacz, lecturer and coordinator of the Strategic Discussions for Nebraska, UNL College of Journalism and Mass Communications, Anderson Hall 133, 402-472-3075; Home: 911 Twin Ridge Road, Lincoln, NE 68510, 402-488-4010; mgarbacz2@unl.edu. (Nov. 2010)

Kerry Hoffschneider, public relations director, Epworth Village, P.O. Box 503, York, NE 68467, 402-362-3353, ext. 1144; Home: 2302 Road U-650, Waco, NE 68460, 402-363-8963; Kerry@epworthvillage.org. (Nov. 2010)



Sara Leimbach

UNL Student Redesigning NPW Website

University of Nebraska-Lincoln senior Sara Leimbach of Omaha is working to redesign NPW's website and hopes to roll out the new look in February.

An advertising major with a graphic design concentration, Leimbach is an intern in the interactive department at Swanson-Russell advertising agency in Lincoln. She was highly recommended for this job by her UNL web design instructor.

While simplifying the navigation, Leimbach will also incorporate many of the ideas put forth by last year's website committee of Doreen Pfost, Jan Thompson and Glennis Nagel.



Brown Receives IABC-Lincoln Award

NPW President Ruth Brown was honored by Lincoln chapter of the International Association of Business Communicators on Nov. 18 when she received their Leader in Communication Award during a noon luncheon.

Brown is an associate professor with the College of Journalism and Mass Communications at the University of Nebraska-Lincoln.

The core of her classroom philosophy is the basics.

"I always tell my students the principles never change," she said. "Academics are about teaching those principles. You have to know the rules before you can break the rules."

"Her students praise her careful advising in addition to her fine teaching," said Amy Struthers, sequence head and associate professor of advertising at UNL. "Ruth works tirelessly to help each of her students find their place in

the world of communications.

"She is an inspiration to her colleagues as well, bringing a thoughtful and informed perspective to our work and serving as a role model for those of us who aspire to attain her level of expertise."

"Ruth's hard work and leadership are models for her colleagues at the College of Journalism and Mass Communications and across the state," said Gary Keibel, dean of the College of Journalism and Mass Communications. "We're pleased her work is being recognized by this honor."

As a teacher, Brown finds it exciting to keep up with new media and to show students how to use new media strategically.

"Traditional media needs to learn even more how to incorporate new media into their current way of operating. We need to see new media as a complement instead of a competitor."

Spring Convention at Halsey 4-H Camp

Save the last weekend in April 2011 for a rustic rural adventure in the Sandhills.

Spring convention at the Halsey 4-H Camp will be a more informal affair than normal, so come prepared to relax. There will be the usual presentations of awards for Professional and Scholastic Contests, as well as workshops and information about Nebraska's ecology, but instead of fancy duds for the banquet, members should bring sleeping bags, pillows, linens and casual clothing. The cabins are comfortable, but keep in mind that we'll be sleeping dorm style in bunk beds, and sharing bathrooms.

If you have a talent to display (kazoos Joanie?) bring along musical instruments, poems to read, or simply a family funny to relate. A jam session is planned after the Saturday night festivities.

The registration fee will include room and board, so a flat rate covers everything for the weekend. Halsey 4-H Camp is famous for its food and can accommodate special dietary needs. Contact person for this is Jody Swisher, at 308-533-2224. Look for more information in the spring newsletter.





The Nebraska Press Women Newsletter is published and sent electronically four times a year. Send e-mail address updates and member news to 2011-12 editor Rita Brhel, rita.brhel@gmail.com.

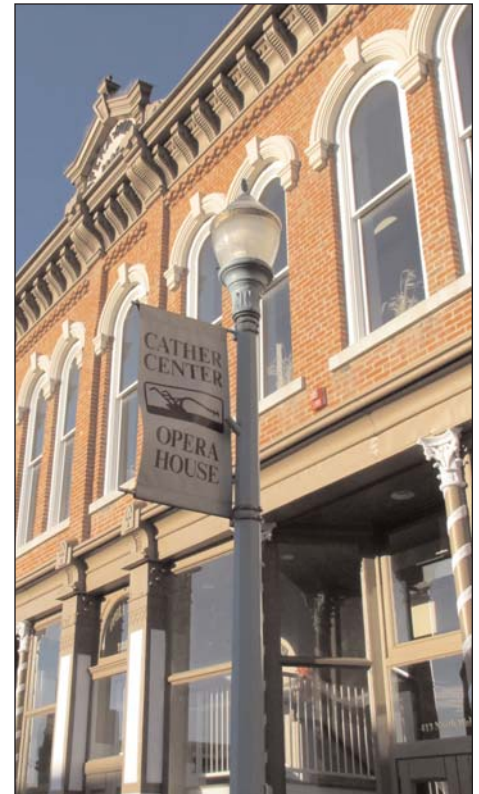
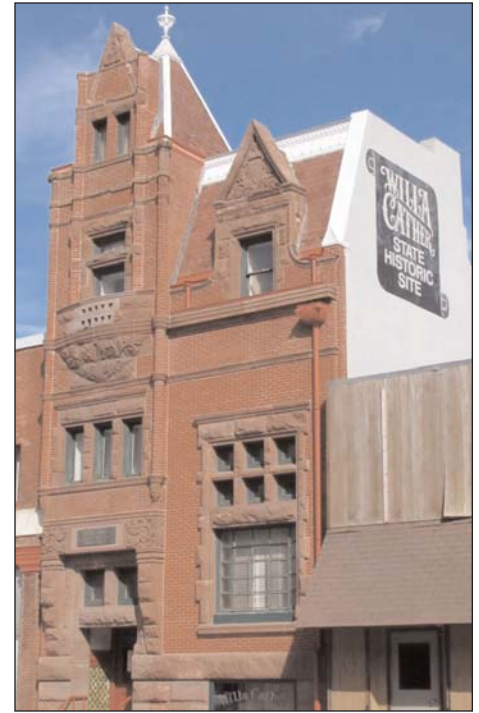
NPW Calendar

March 1: NPW Spring NEWSeLETTER copy deadline

March 15: NPW Spring NEWSeLETTER sent electronically

April 29-30: NPW Spring Convention, Halsey.

Sept. 8-10: National Federation of Press Women Conference at Harrah's in Council Bluffs. Co-hosted by NPW and IPW.



More Fall Convention Photos by Lori Potter.

Top left: Members shop at the Cather Center gift shop in between convention sessions.

Bottom left: Past COA recipients pose with 2010 winner Terri Hahn.